

Taken out of final

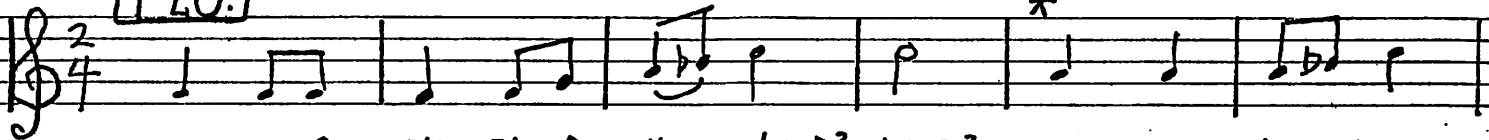
And

[CUT]

IS OUR ASSEMBLY A SHINING LAMP?

F
FLO:

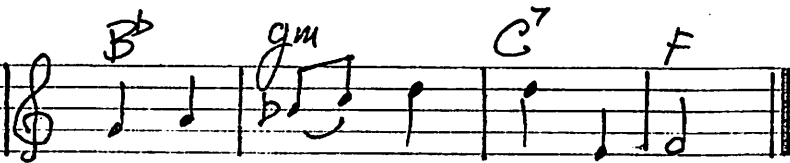
CHORUS (2ND TIME)



IS OUR ASS-EM-BLY A SHINING LAMP? LAMP? ARE WE HEAVEN-LY
AID-ED ARE WE BY THE SPIRIT OF GOD. OUR DE-FENDER IS



HU-MAN BEINGS ARE WE SPREADING THE LIGHTS OF KNOW-LEDGE,
'ABDUL BA-HÁ. HOW CAN HE SPREAD HIS WINGS OVER US IF OUR



O-VER ALL CRE-A-TED THINGS.
MINDS ARE NOT HERE AT ALL?

Cut from Gravel
WHAT A DAY III

GRAVEL SWITCH CHORUS:

WHAT A DAY! WHAT A DAY!

WHAT A DAY, WHAT A DAY!

KEN-TUCK-y's GRAVEL SWITCH IS ON THE WAY

LITTLE

TOWN, ON THE WAY

WE WON'T LET ANY

BO-DY PUT HER DOWN

WE WON'T

SHE'S NOT JUST AN OR-DIN AR-Y TOWN!

LET ANY-ONE SHE'S PUT HER DOWN JUST AN OR-DIN-AR-Y TOWN! WHAT A TOWN WHAT A TOWN

SHE'S GOT HER L. S. A. WONDERFUL TOWN!

WHAT A GREAT LITTLE TOWN

WON-DERFUL TOWN SHE'S GOT HER L. S. A. WHAT A GREAT LITTLE TOWN